

WATER TROUGHS



Durable, long life
trough solutions
for storing
and supplying
stock water



by **aliaxis**

FEATURES

Whether you are storing, transporting or distributing water or wastewater RXP has the solution for you, with manufacturing facilities New Zealand wide and selections of strong supporting brands RXP can assist whatever your requirements.

Features

- Made from strong virgin PE material.
- Super sized ribs in walls for maximum strength
- Super strong rolled rims for added stability
- Corrugations in floor for strength
- Easy access to ballcock under lid in an enclosed cavity
- Hidden lead in pipe to ballcock
- Light weight means easy to handle
- A range of sizes to suit all situations
- Use with RX 150mm ballfloats
- New Zealand manufactured



Application

The RX Plastics Super Trough Range is constructed from strong virgin PE material. Manufactured for the harshest conditions and abuses. Durable long life trough choice for storing and supplying stock water.

Ideal water troughs for cows, calves, sheep, goats and horses

BENEFITS

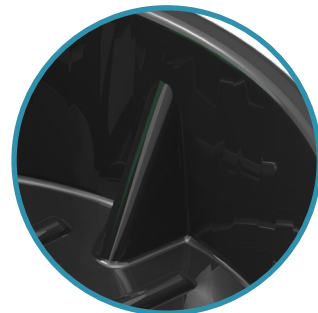
Super strong rim

Rolled rims give extra strength and stability. Chamfered edges minimise damage from stock rubbing which prevents trough damage.



Super sizes ribs

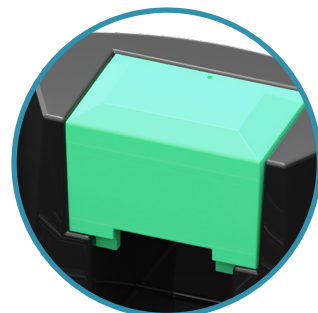
Super sized ribs in side walls and corrugations in floor for maximum strength.



Lid in place

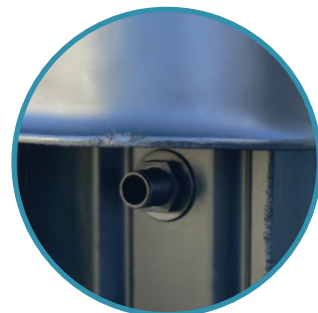
Lid protects against damage to ballcock and float.

If ballcock needs maintenance simply undo a single stainless steel bolt and remove trough cover completely for full access.



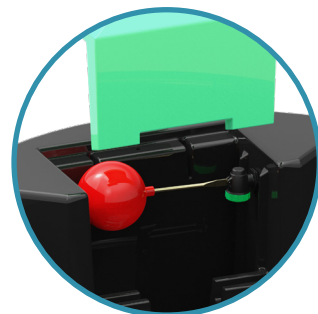
Hidden lead-in pipe

RXP troughs provide protection on the lead-in pipe to the ballcock and is protected from rubbing by stock.



RXP's full flow ballcock and float

RXP use specially manufactured full flow ballcocks with 150mm ballfloats to ensure that the flow is kept up for thirsty animals on a hot day.



SUPER TROUGH RANGE

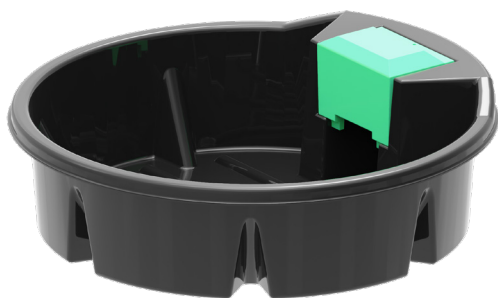
RXP Super Troughs come standard with a 20mm long threaded full flow (PH.VERSARX.20LSA) float valve complete with backnut, 150mm ballfloat and 300 litre troughs upwards also have a 40mm long bung. This full flow valve is rated to a maximum of 5bar - 160lpm.

Can be easily moved for use when break feeding.
Ideal around stock yards and lanes

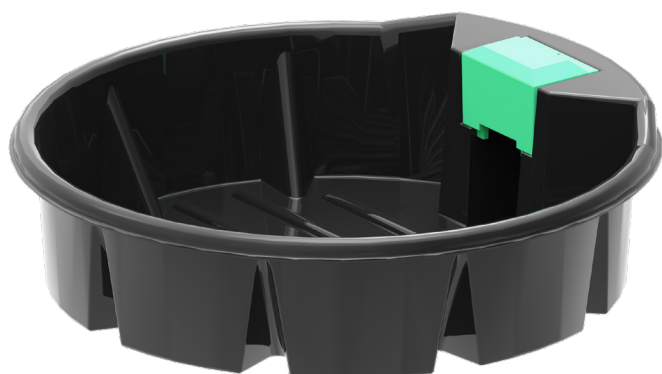
Round troughs



RXTR200LRDB 200 litre trough
(1180mm x 390mm deep)

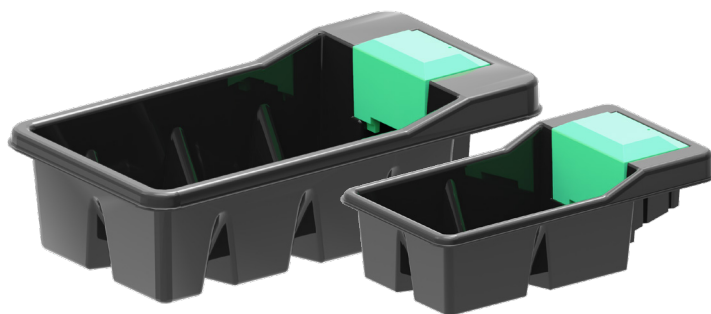


RXTR500LRDB 500 litre trough
(1620mm x 420mm deep)



RXTR1200LRB 1200 litre trough
(2130mm x 580mm deep)

Rectangular troughs

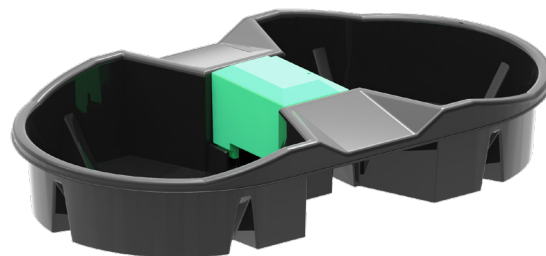


RXTR100LRTB 100 litre trough
(1160mm x 620mm x 300mm deep)

RXTR300LRTB 300 litre trough
(1620mm x 880mm x 410mm deep)

Between the fence trough

- Designed to service two paddocks of stock
- Each side holds 175 litres of water
- For ease of access the ballcock cover is off to one side of fence
- Ideal for sheep and lambs due to low sides



RXTR350LRTB 300 litre trough
(1935mm x 1100mm x 380mm deep)

Spare parts



Super trough - trough kits
Made up of PH.VERSARX.20LSA,
(bolt and washer)



RXTCG
- Trough cover

STANDARD TROUGH RANGE

Fence hung troughs

- Comes with 20mm full flow ballcock and float
- Fully moulded body that protects the ballcock
- Strong stainless steel arms that are adjustable
- Threaded bung in base for easy cleaning

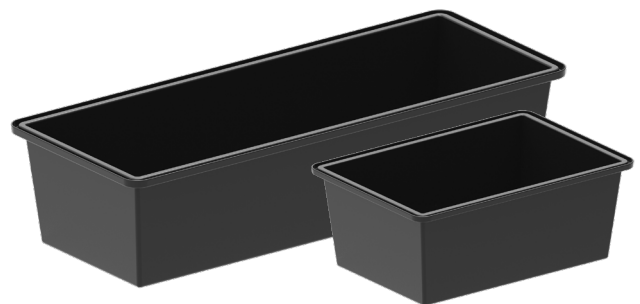


RXTR12L 12 litre fence hung trough
(385mm (l) x 340mm (w) x 320mm (h))

RXTR25L 25 litre fence hung trough
(500mm (l) x 375mm (w) x 400mm (h))

Standard rectangular troughs

- Rolled rim for added strength
- Dual purpose - can be used for stock water or feed
- Made from black polyethylene



RXTR45LRTB 45 litre rectangular trough
(600mm x 400mm x 250mm)

RXTR115LRTB 115 litre rectangular trough
(1240mm x 450mm x 300mm)

Porta/Drag troughs

- Comes with 20mm full flow ballcock and float
- Easy to move
- More stock able to access water due to shape



RXTR180L.COMP 180 litre porta trough
(950mm (w) x 500mm (h))

Comes complete with:-

- 50 metres of 20mm Low Density Pipe
- 150mm ballfloat
- PH.VERSA.FV20L and a TV.CN.
- 20mm Flexible hose connector.
- RXTTI and RXTC 32 for easy towing

RXTR180L 180 litre porta trough

Sold without pipe and fittings

Standard round troughs

- Comes in black and mist green
- Ideal use for outdoor fish ponds
- 20mm brass socket moulded in



RXTR450LRDB 450 litre round - black
(1380mm x 430mm deep)

RXTR450LRDB 450 litre round - green
(1380mm x 430mm deep)